



623 AND 625 NORTH COLUMBUS STREET - FRONT ELEVATION

SCALE: 1/8" = 1'-0"



623 AND 625 NORTH COLUMBUS STREET - SOUTH ELEVATION

SCALE: 1/8" = 1'-0"



623 AND 625 NORTH COLUMBUS STREET - REAR ELEVATION

---

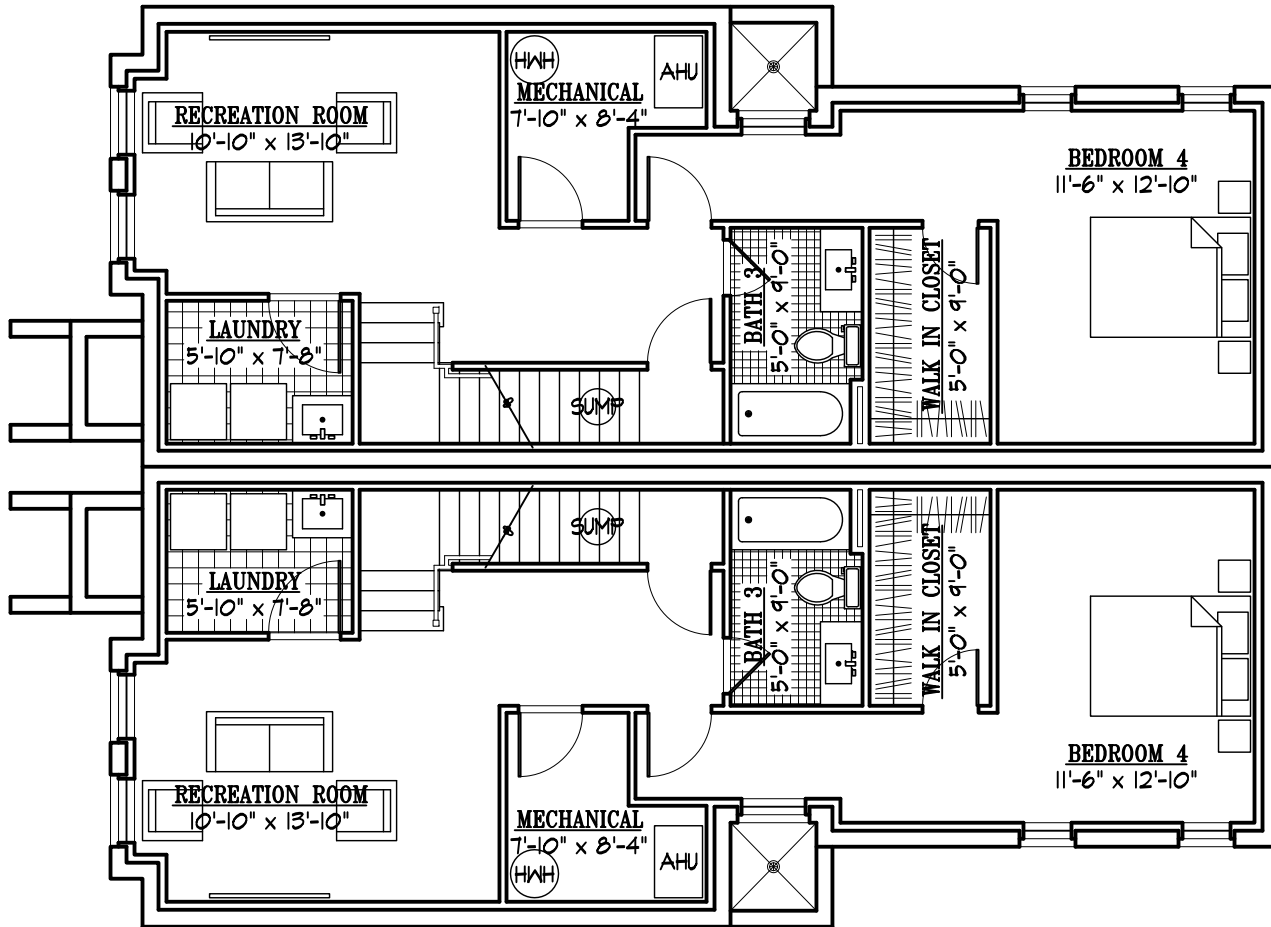
SCALE: 1/8" = 1'-0"



623 AND 625 NORTH COLUMBUS STREET - NORTH ELEVATION

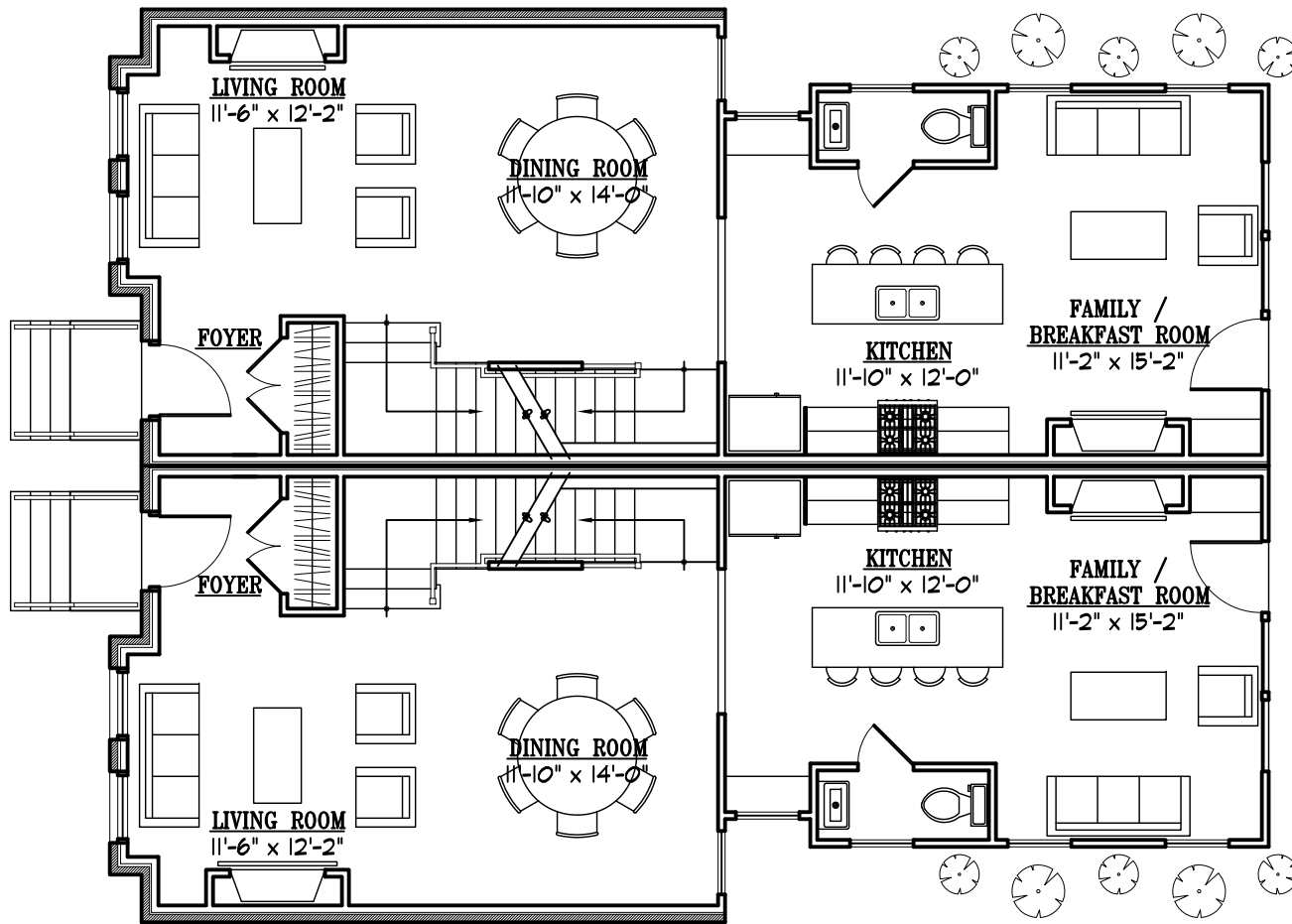
---

SCALE: 1/8" = 1'-0"



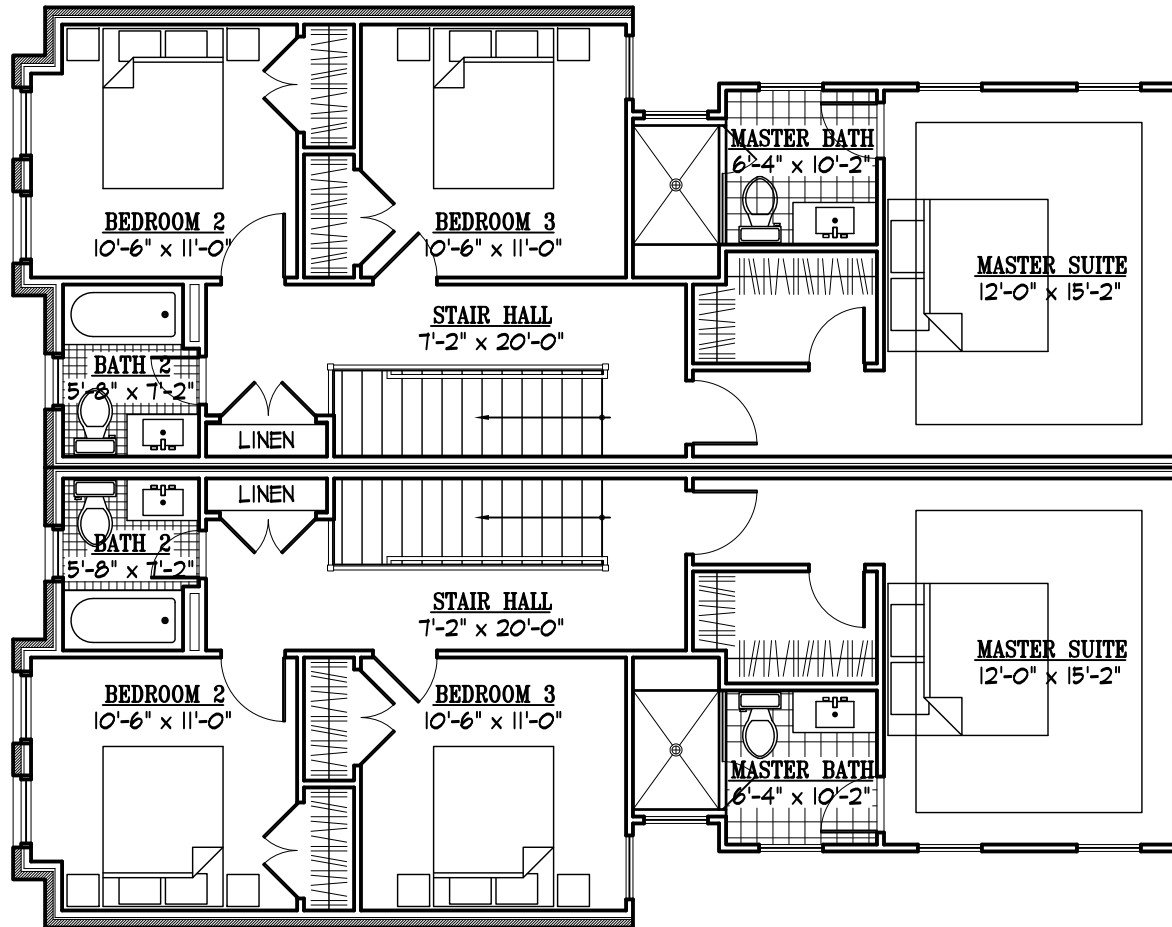
623 AND 625 NORTH COLUMBUS STREET - BASEMENT PLAN

SCALE: 1/8" = 1'-0"



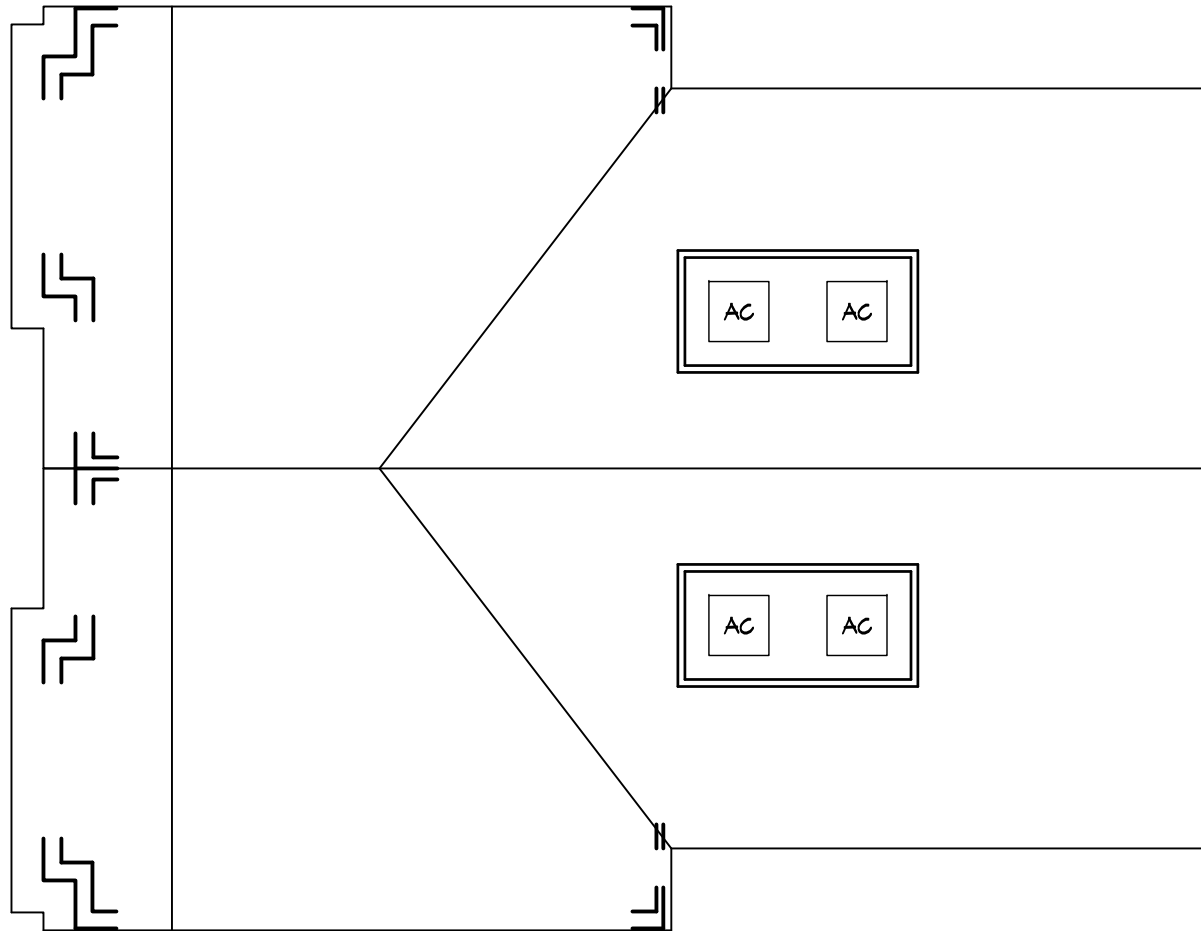
623 AND 625 NORTH COLUMBUS STREET - FIRST FLOOR

SCALE: 1/8" = 1'-0"



623 AND 625 NORTH COLUMBUS STREET - SECOND FLOOR

SCALE: 1/8" = 1'-0"



623 AND 625 NORTH COLUMBUS STREET - ROOF PLAN

---

SCALE: 1/8" = 1'-0"