



611 & 613 NORTH COLUMBUS STREET - FRONT / WEST ELEVATION

---

SCALE: 1/8" = 1'-0"



611 & 613 NORTH COLUMBUS STREET - SIDE / SOUTH ELEVATION

---

SCALE: 1/8" = 1'-0"



611 & 613 NORTH COLUMBUS STREET - REAR / EAST ELEVATION

---

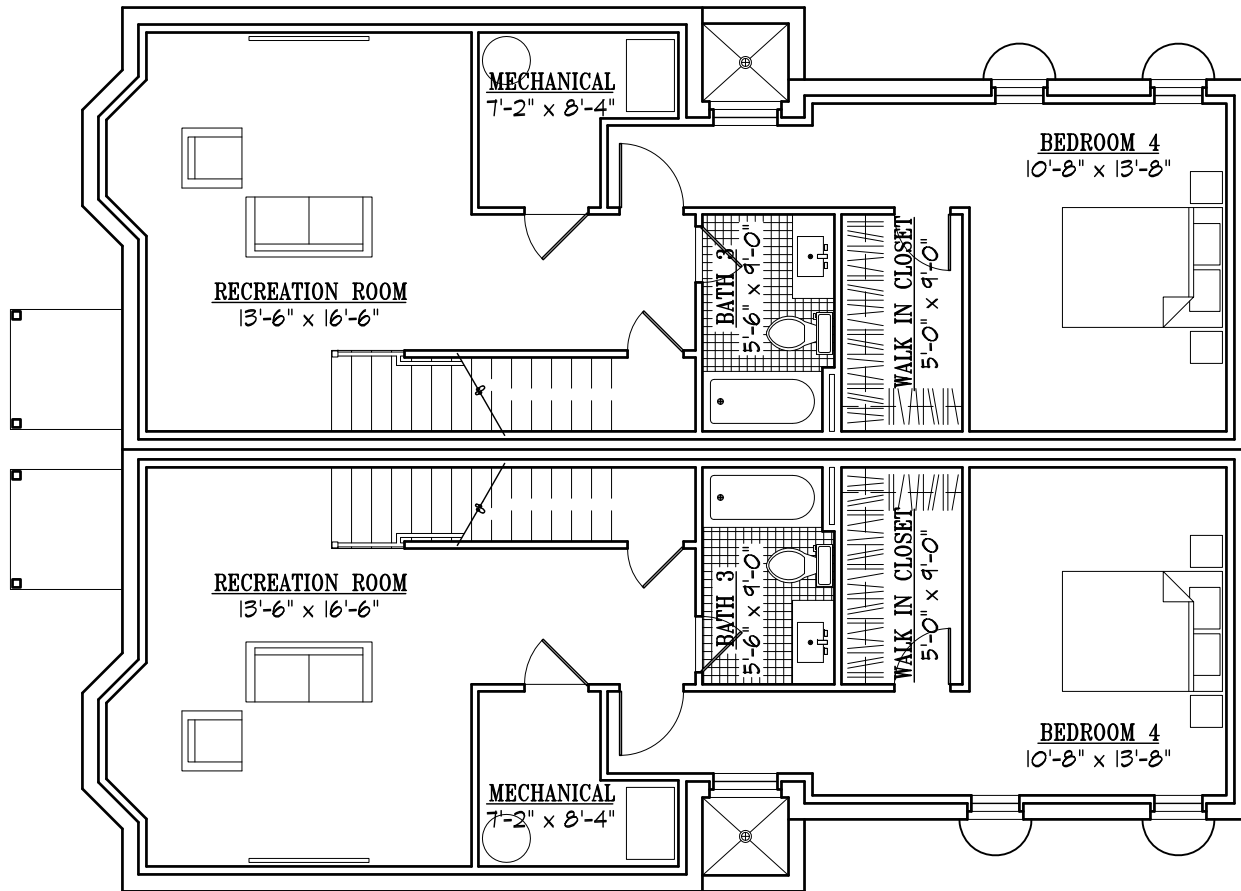
SCALE: 1/8" = 1'-0"



611 & 613 NORTH COLUMBUS STREET - SIDE / NORTH ELEVATION

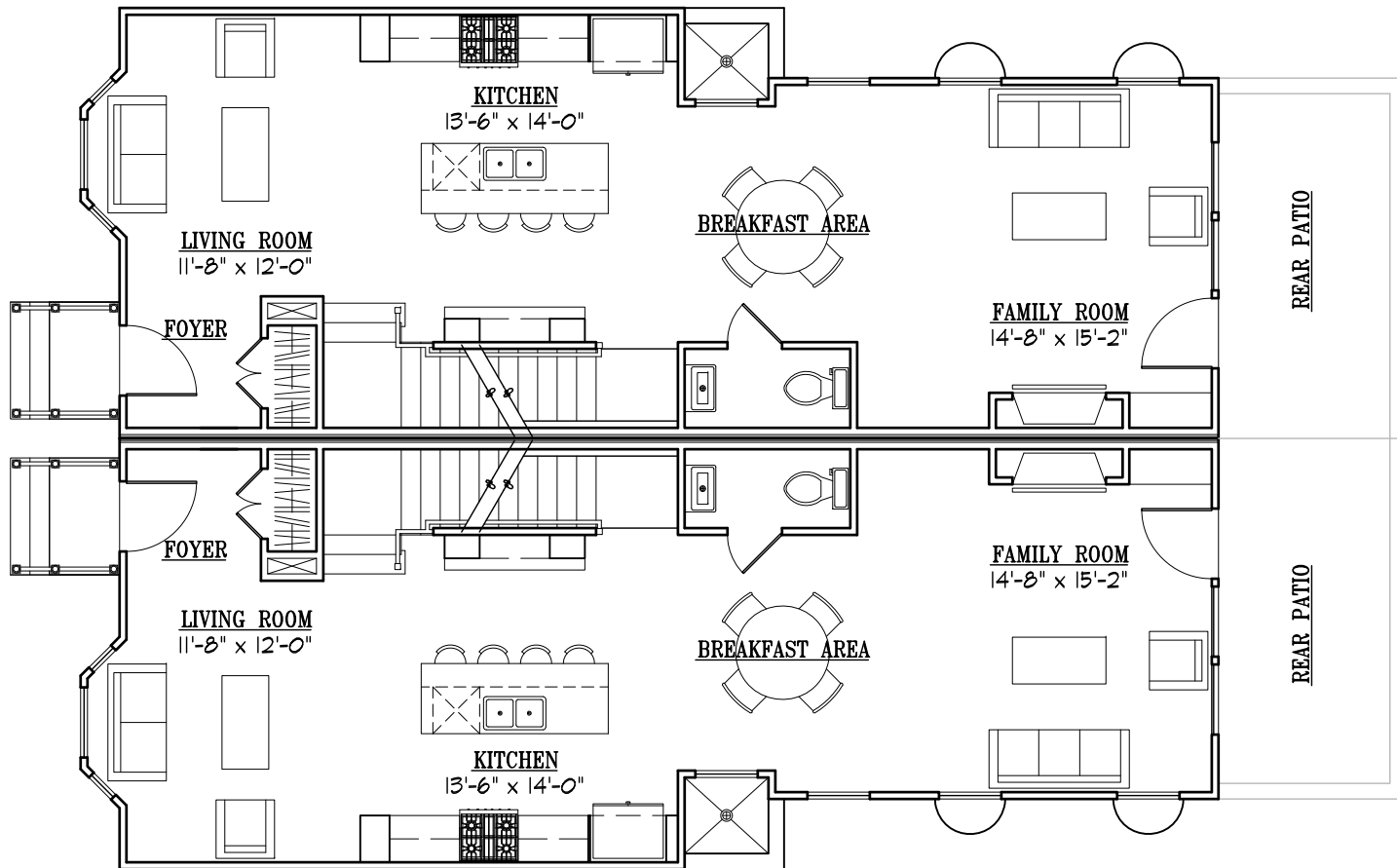
---

SCALE: 1/8" = 1'-0"



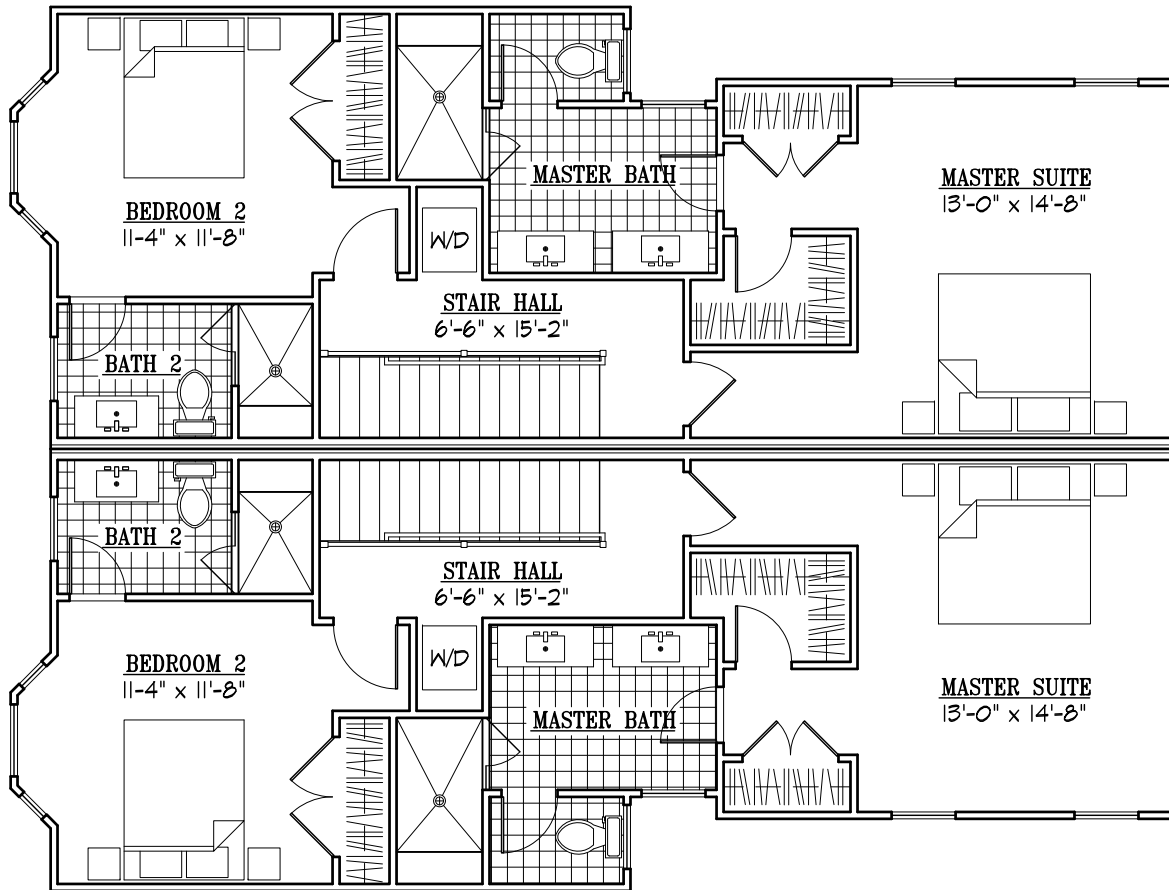
611 & 613 NORTH COLUMBUS STREET - BASEMENT PLAN

SCALE: 1/8" = 1'-0"



611 & 613 NORTH COLUMBUS STREET - FIRST FLOOR

SCALE: 1/8" = 1'-0"



611 & 613 NORTH COLUMBUS STREET - SECOND FLOOR

SCALE: 1/8" = 1'-0"